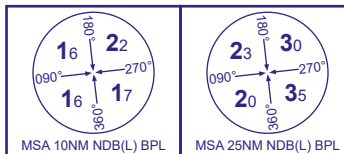


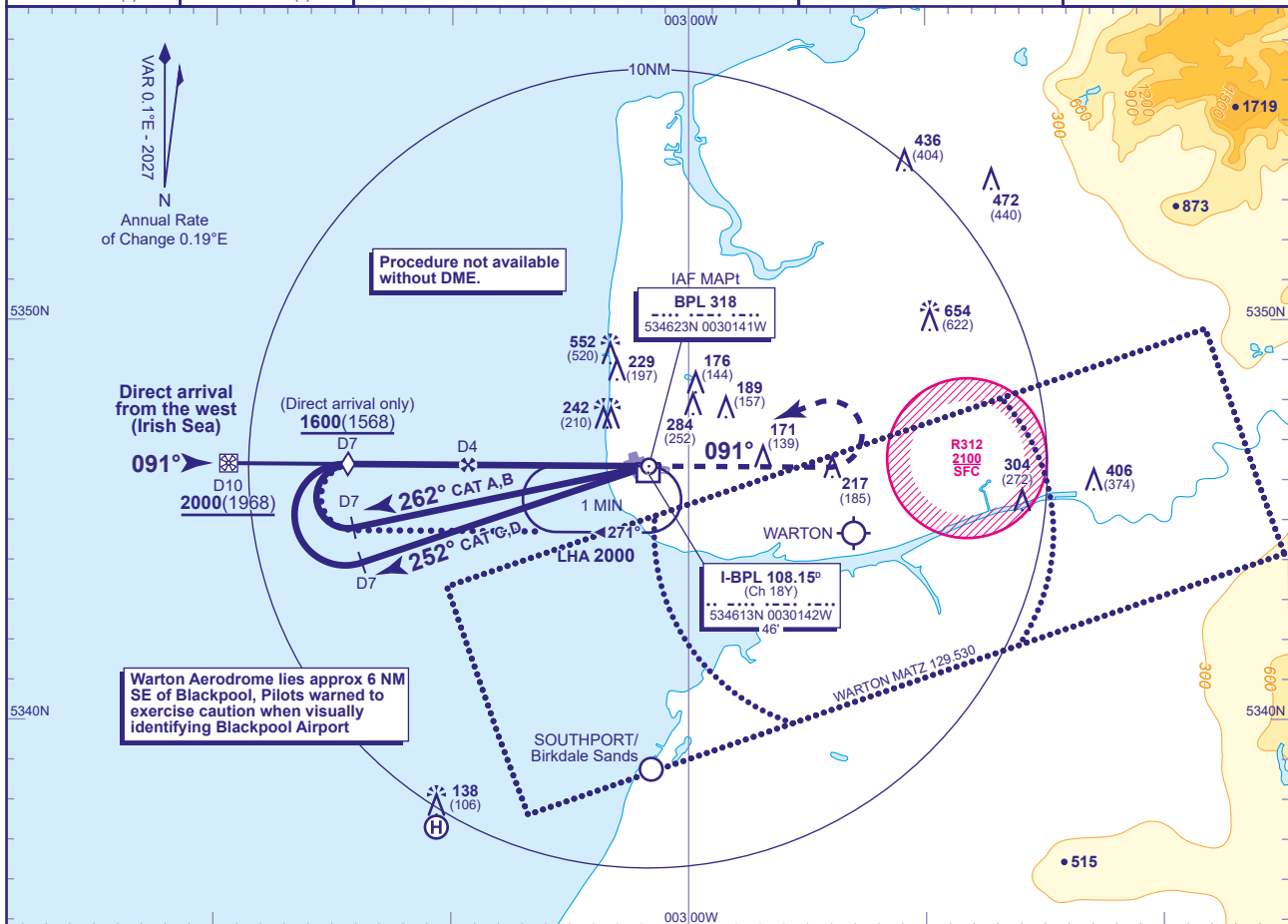
INSTRUMENT APPROACH CHART - ICAO

BLACKPOOL
NDB(L)/DME
RWY 10
(ACFT CAT A,B,C,D)



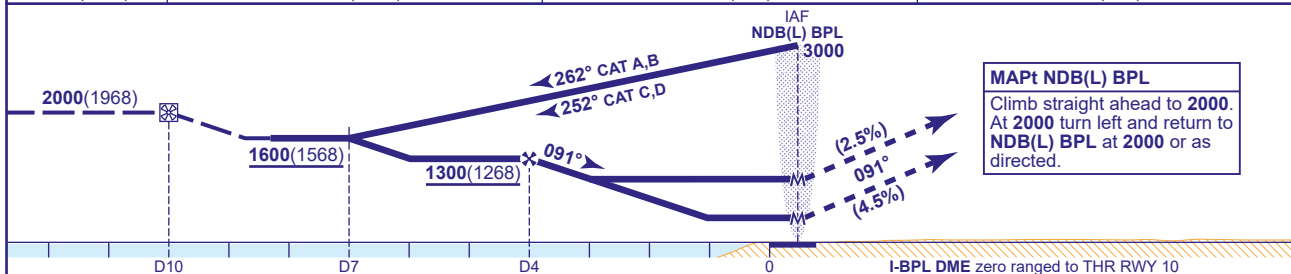
APP	119.955	BLACKPOOL APPROACH	AD ELEVATION	34
TWR	119.955	BLACKPOOL TOWER	THR ELEVATION	32
ATIS	127.205	BLACKPOOL INFORMATION	OBSTACLE ELEVATION	654 AMSL (622) (ABOVE THR)
			BEARINGS ARE MAGNETIC	

TRANSITION ALTITUDE
3000



RECOMMENDED PROFILE Gradient 5%, 300FT/NM

DME I-BPL	4	3	2
ALT(HGT)	1300(1268)	1000(968)	700(668)



Aircraft Category		A	B	C	D	Rate of descent	G/S KT	160	140	120	100	80
		4.5%	3.5%	3.0%	2.5%		FT/MIN	860	750	640	540	430
OCA(OCH) Climb Gradients	4.5%	430(398)	430(398)	430(398)	430(398)							
	3.5%	700(668)	700(668)	700(668)	700(668)							
	3.0%	850(818)	850(818)	850(818)	850(818)							
	2.5%	1000(968)	1000(968)	1000(968)	1000(968)							
VM(C)OCA (OCH AAL)	Total Area	590(556)	830(796)	930(896)	930(896)							
	South of RWY 10/28	N/A	N/A	N/A	N/A							

ALTERNATIVE PROCEDURE EXTENDED HOLDING PATTERN
From the NDB(L) BPL holding pattern at 3000 extend the outbound leg, descending to **not below 1600(1568)**. At I-BPL DME 7 turn right, continuing descent as required, to establish on the extended FAT. When established continue as for main procedure.

DIRECT ARRIVAL FROM THE WEST (IRISH SEA)
When cleared by ATC, before I-BPL DME 15 inbound, fly DR track to intercept extended FAT (QDM 091°) at I-BPL DME 10 (IAF). Fly extended FAT inbound to cross I-BPL DME 7 **not below 1600(1568)**. Descend to cross I-BPL DME 4 (FAF) **not below 1300(1268)** then continue as for main procedure.

NOTE 1 FAT offset 3.6° south of RWY C/L.
2 Lowest altitude to commence procedure from holding or missed approach is **2000**.
3 Aircraft not permitted below **1670** over EGR312 for the purpose of landing at Blackpool.

CHANGE (4/26): MAG VAR. MAG TRACKS. VM(C)OCA(OCH AAL) TOTAL AREA CAT A. OCA(OCH) 4.5%.